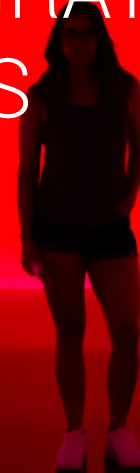




**FUEL CELL
STACK**

**28 VEHICLE MODELS
3000+ INTEGRATED STACKS
6 COUNTRIES
16 CITIES**



VANCOUVER

SHANGHAI

FOSHAN

SHANGHAI

655 Jinyuan 1st Road, Jiading, Shanghai

VANCOUVER

#104-7337 North Fraser Way, Burnaby, BC, V5J 0G7

FOSHAN

No. 4 Industrial Village,
Lailiang Road, Nanhai District,
Foshan, Guangdong

Contact us: sales@unilia.com

www.unilia.com



UNILIA.COM



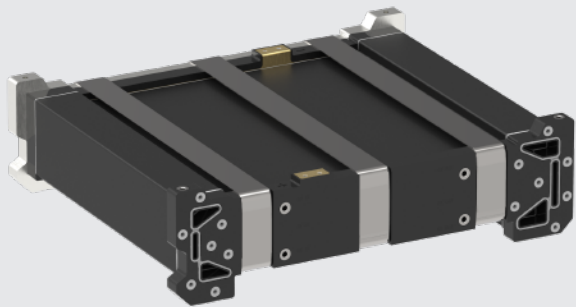
ISO 9001:2015



IATF 16949:2016



RDW CERTIFICATE



TECHNICAL SPECIFICATION

SCALABLE TO 96kW STACK POWER ¹	-30°C FREEZE START-UP
3.8kW/L POWER DENSITY	2.1kW/g PGM ² UTILISATION

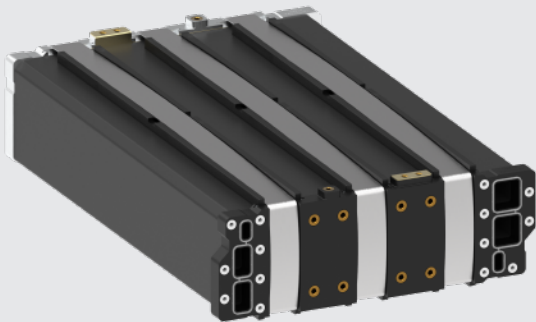
¹ Power at 2.5 bara Oxidant, 0.6V/cell
² Platinum Group Metal Catalyst



TECHNICAL SPECIFICATION

SCALABLE TO 130kW STACK POWER ¹	-30°C FREEZE START-UP
4.4kW/L POWER DENSITY	3.9kW/g PGM ² UTILISATION

¹ Power at 2.5 bara Oxidant, 0.6V/cell
² Platinum Group Metal Catalyst



TECHNICAL SPECIFICATION

SCALABLE TO 180kW STACK POWER ¹	-30°C FREEZE START-UP
ADDITIONAL INFORMATION ON REQUEST	

¹ Power at 2.5 bara Oxidant, 0.6V/cell



POLARIS is a versatile stack, designed and engineered by UNILIA for deployment in fuel cell systems for everything from minibuses to heavy-duty trucks.

Ideal applications are commercial and specialised vehicles, ocean-going or freshwater vessels, and mobile power units.

ELECTRA stacks have been developed by UNILIA from the ground up with in-house MEA. They are suited for use in the most demanding heavy-duty fuel cell systems.

Ideal applications are vehicles, vessels, and power units with heavier load and torque requirements, and harsh working conditions.

SIRIUS is a brand new stack incorporating in-house MEA for optimised value.

The stack provides high power in a flexible form factor for mobility use cases or stationary power. It is optimisable for a broad range of product integrations and operating environments.